

# Briton #1 for door closers

Which door closer is right for your application?



## Low Usage

up to 15,000 cycles per year



### Briton 121CE

Compact Overhead Closer

- Budget closer
- Fixed power size 3
- EN Classification **483113**



### Briton 131

Template Adjustable Overhead Closer

- Adjustable power size 2 - 4
- Adjustable closing speed and latch action
- EN Classification **382-4113**



### Briton 1110

Template Adjustable Overhead Closer

- Slimline closer
- Adjustable power size 2 - 4
- EN Classification **382-4113**



### Briton 1120B

Spring Power Adjustable Overhead Closer

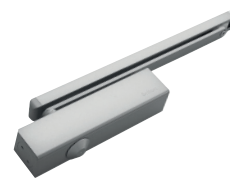
- Adjustable power size 2 - 4
- Backcheck facility
- EN Classification **482-4113**



### Briton 1130B

Spring Power Adjustable Overhead Closer

- Adjustable power size 2-6
- Backcheck facility
- EN Classification **482-6113**



### Briton 2300

Cam Action Slide Channel Overhead Closer

- Adjustable power size 2 - 4
- Adjustable closing speed, latch action & backcheck
- Accufit fixing template & mounting bracket
- EN Classification **482-4113**



### Briton 2003

Fixed Power Overhead Closer

- Fixed power size 3
- Track arm option available
- EN Classification **483-113**



### Briton 2003V

Spring Power Adjustable Overhead Closer

- Adjustable power size 1 - 4
- Track arm option available
- Accufit fixing template & mounting bracket
- EN Classification **482-4113**



### Briton 2700

Spring Power Adjustable Overhead Cam Action Closer

- Adjustable power size 2 - 5
- Electro-magnetic version available 2720B.TE
- Adjustable closing speed, latch action, backcheck, delayed action and hold-open
- EN Classification **482-5113**



### Briton 2130B

Adjustable Power Overhead Closer

- All purpose closer
- Adjustable power size 2-6
- Backcheck facility
- Accufit fixing template and mounting bracket
- EN Classification **482-113**



### Briton 996

Hold-Open & Free-Swing

- For doors linked to a fire alarm system. Ideal for environments covered by The Equality Act legislation as doors can safely be held open or allowed to swing free.
- Fixed power size 3, 4 & 5
- Hold-open or Swing-free
- Other versions available: Briton 1130B.TE and Briton 2720B.TE



CE all products are CE certified

! It's important to select the right exit device for your application

\*Guarantee 2 years electrical, 10 years mechanical \*\* Only applicable to trimplate version

# Confused by Classifications?

Get your FREE pocket sized guide to EN classification and CE markings today!



Visit [www.allegion.com/uk/firedoorsafety](http://www.allegion.com/uk/firedoorsafety)